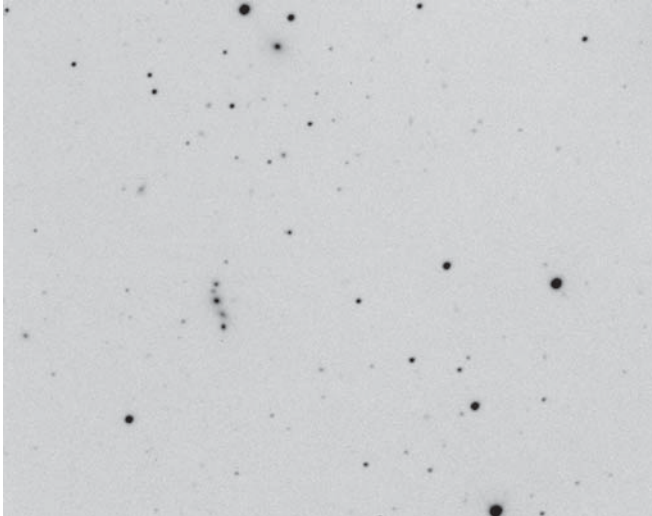
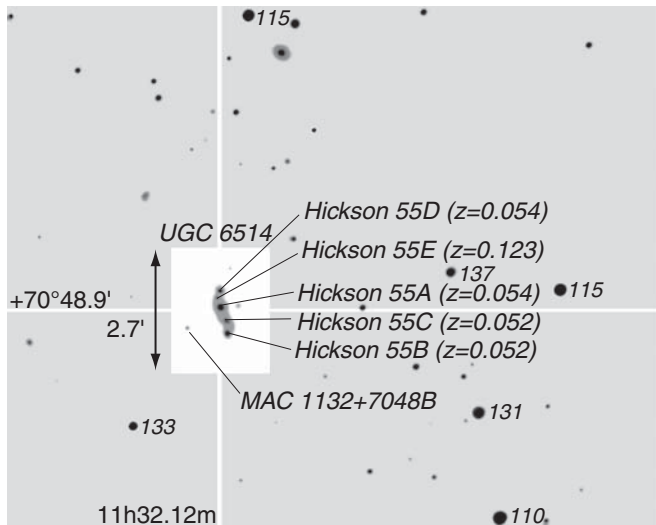


Arp 329, UGC 6514, Hickson 55
Galaxy chain



Tim Hunter and James McGaha, 24-inch *f*/5 Newtonian, Apogee 7 camera, 60-second exposure.



Visual Observations

Barbara Wilson 20-inch *f*/4 Newtonian, 290x: At low power it is a linear blur. At higher power, when seeing settles down, three of the five galaxies are seen.

David Tosteson 25-inch *f*/5 Newtonian, 270x: After several minutes searching, four galaxies seen condensing out of the line. Component E probably not seen. Mag 13 star 4' to SE. In 36-inch: five Hicksons seen and MAC 1132+7148 SE of the main group. Galaxy W of 55A not seen.

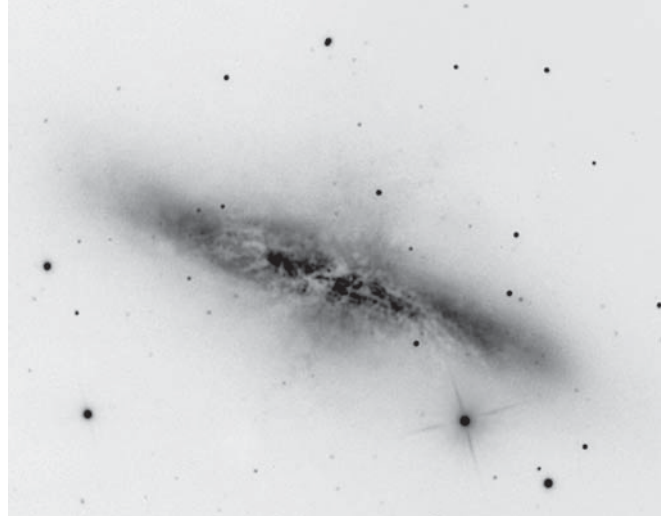
Notes

Hickson 55A mag 15.9, 0.2' x 0.2' and SA0 pec. See table at the start of Chart B for details of all galaxies.

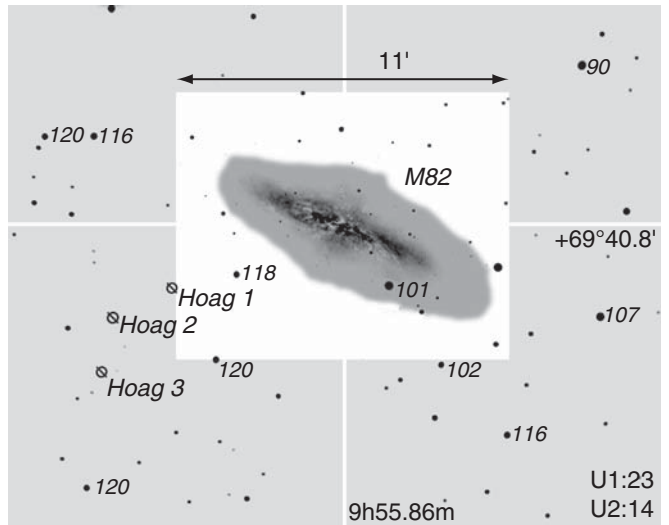
Naming Irregularity Hickson and VV letters are different.

Challenge Separate the five galaxies.

Arp 337, Messier 82, NGC 3034
Unique



Robert Gendler, 12.5-inch Ritchey-Chrétien at *f*/9, SBIG ST-10XME camera, 120-minute exposure.



Visual Observations

Barbara Wilson 20-inch *f*/4 Newtonian, 290x: Long cigar-shaped with three dark lanes cutting across the width. Mottled appearance.

David Tosteson 18-inch Newtonian, 350x: 10'–12' with many dark stripes perpendicular to the plane of the galaxy, especially just N of the middle. Mottling, especially in the center.

Notes

NGC 3034 Messier 82 is mag 8.4, 11.4' x 4.3', I0 sp, and $z = 0.00068$.

Arp's Notes Internal explosion.

Note the arc of three mag 20 quasars ($z = 2.05$) examined by Burbidge *et al.*, *Ap. J.*, 242:L55-L57.

Challenge The filaments projecting from the center.