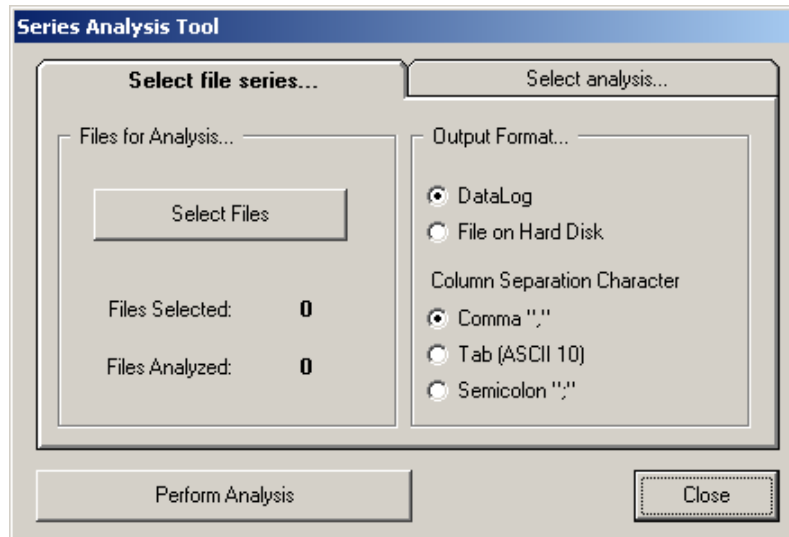


Series Analysis Tool

Measures statistical properties in a selected group of images.

This tool is designed to explore a series of related files (such as dark frames). It can examine the statistical properties of individual pixels, selected regions, and entire images from a series of images on your hard disk.



Select File Series Tab

Files for Analysis

Select Files Opens the file selection dialog. Select the files you wish to examine. The number of files you have selected will be displayed, and as they are analyzed, you will see the count of files done increase.

Output Format

DataLog Data will be output to the DataLog.

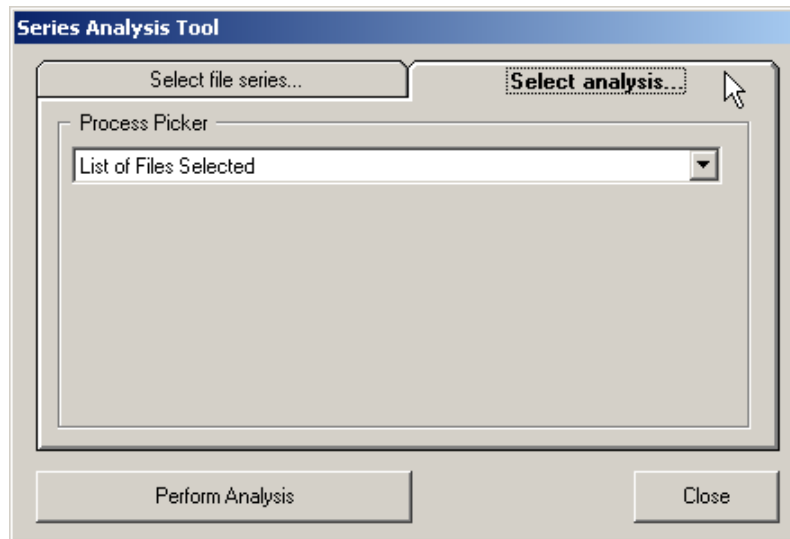
File on Hard Disk Data will be saved in a text file. You will be asked to supply a directory and filename when you click the Perform Analysis button.

Column Separation Character Select the character used to delimit columns of output data.

Comma Use the "," character.

Tab Use the tab character (ASCII 10).

Semicolon Use the ";" character.



Select Analysis Tab

Process Picker Select an analytical process from the drop-down list box.

List of Files Selected Returns a list of the files you have selected. This option is minimal, but useful because you sometimes need a text-format list of files.

Whole Image Statistics Returns statistics of each image in the set of images.

Region of Interest Statistics Measures the statistics of a region defined by the upper left corner (X1,Y1) and the lower right corner (X2,Y2).

Single-Pixel Statistics Measures the pixel value of a single pixel at coordinates (X,Y).

Text Boxes These vary in number and required text depending on the process you have requested.

Perform Analysis Click on this button to perform the selected analysis on the selected image.