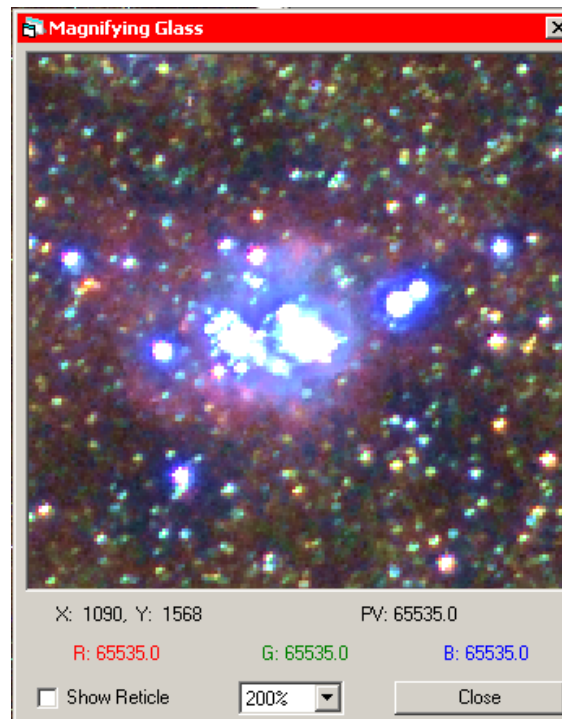


Magnifying Glass

The magnifier allows you to take a close-up look at part of an image.



This tool displays a magnified region of the area of the image under the cursor. A set of crosshairs can be turned on by checking the **Reticle** box. A dropdown list allows you to choose a magnification of **200%**, **400%**, **800%** or **1600%**. As you **move the cursor around the currently active image**, the display in the Magnifying Glass Tool will follow it, displaying the pixel value and coordinates of the pixel centered in the crosshair. If the image is a color image, the RGB triad will also be displayed.